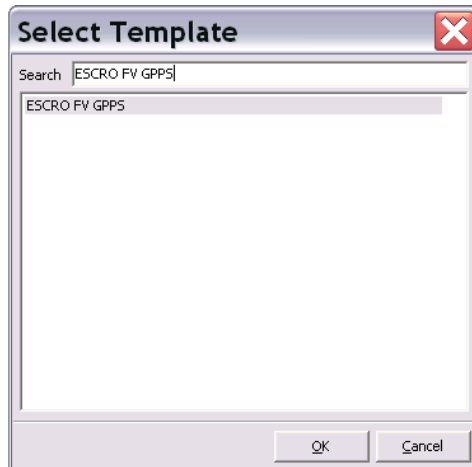


ESCRO – GPPS

To access ESCRO template – Go into patients notes and enter consultation mode. Press ‘T’ for templates and enter ESCRO FV GPPS to bring up template. Can also be accessed via master template,



Like the other ESCRO templates there are mandatory areas that must be completed for payment and others that are areas of Good Practice. The mandatory fields will be marked with a blue ‘P’



ESCRO FV GPPS.

Enhanced Service Claims (Drug misuse - ES read codes will include or remove the patient from your enhanced service claims)

P Drug misuse - enhanced service commenced Drug misuse - enhanced services administration not found

Drug misuse - enhanced service completed Drug misuse - enhanced service completed not found

Specify if Successful completion/Non-compliance

P Drug addiction notification (SMR 25) Drug addiction notification not found

P Seen at substance misuse appointment Seen in substance misuse clinic not found

P Substance misuse clinical management plan agreed Substance misuse clinical management plan agreed not found

P Substance misuse clinical management plan reviewed Substance misuse clinical management plan reviewed not found

Ongoing Assessment

Christo Inventory Completed /20 Injecting Status

Patient Contract completed Contract agreed with - Employment Status

Toxicology screening test Specify time period

Drug intake observed Supervised consumption - In regular contact with children

Medication review due Not in regular contact with children

Blood Borne Viruses

Health Education Hep A Screening

Referred to hepatology service Hep B Screening

Hep C Screening Hep C PCR Specify positive/negative

HIV Screening

Hep A and B Immunisation

Hep A Immunisations Hep B Immunisations Hep A + B Combined Imm

P - Indicates data required for ES payment

Version 1.0 OK Cancel

Enhanced Service Claims (Drug misuse - ES read codes will include or remove the patient from your enhanced service claims)

P Drug misuse - enhanced service commenced Drug misuse - enhanced services administration not found

Drug misuse - enhanced service completed Drug misuse - enhanced service completed not found

Specify if Successful completion/Non-compliance

P Drug addiction notification (SMR 25) Drug addiction notification not found

P Seen at substance misuse appointment Seen in substance misuse clinic not found

P Substance misuse clinical management plan agreed Substance misuse clinical management plan agreed not found

P Substance misuse clinical management plan reviewed Substance misuse clinical management plan reviewed not found

Enhanced service claims

- P - As other ESCRO services would need to ‘commence service’ when seeing patient/client for the first time. Remembering also to mark ‘completion’ of these where you will be prompted to specify whether ‘successful completion’ or ‘non-compliance’.
- P - Drug addiction notification (SMR 25) is done by SIGNPOST but you must make sure this has been done (will need to be renewed after 1 year).
- P - ‘Seen at substance misuse appointment’ is self-explanatory. Patient must be seen at a minimum, once every 3 months by GP and usually minimum of monthly by SIGNPOST. Usually to start with during titration or times of difficulty you are likely to see the patient/client more frequently than this.
- P - ‘Substance misuse clinical management plan agreed’ usually will mean completion of four way agreement (see appendix), treatment plan and subsequent review of this ‘Substance misuse clinical management plan reviewed’. The latter should be done at every appointment.

Ongoing assessment

Ongoing Assessment

Christo Inventory Completed /20 Specify GP name(s)

Patient Contract completed Contract agreed with -

Toxicology screening test Specify time period

Drug intake observed Supervised consumption -

Medication review due

Injecting Status

Employment Status

In regular contact with children

Not in regular contact with children

‘The Christo Inventory’ (see appendix) is a review tool which will have been completed by SIGNPOST prior to starting with you then 3 monthly. This is a good indicator for recovery which covers many aspects of health: physical, mental and social.

We are currently looking at BBV screening and vaccine administration as an audit with 2nd cycle in 3-6 months.